



CANNING

BEVERAGE SOLUTIONS FROM WILD GOOSE





Wild Goose Filling's origins stem from our obsession with the customer experience: a harmony of innovative engineering, manufacturing excellence and trust that we will be here for our Flock of customers today and in the years to come.

Because packaging days shouldn't suck.

BEER



SELTZER



CIDER



COFFEE



WINE



TEA



READY TO DRINK



KOMBUCHA



SPIRITS



MEAD



JUICE



CANNABIS DRINKS



SODA



WATER



INNOVATIVE ENGINEERING

As the craft beverage industries evolve and pursue new advancements, Wild Goose Filling innovates. With patented Wild Goose technology alongside a philosophy of progress, our experienced team of engineers continually develops our systems, providing the best innovations and modular options to grow with your business.

INTUITIVE SUPPORT

Accessible, knowledgeable, real. We took a page from our customers who model true customer service in their breweries. Like our machines, Wild Goose service is built around the customer experience, supporting your goals now and in the future.

WORLDWIDE FLOCK

Under our wing, customers of every size, shape and style around the world use Wild Goose systems. Together, the “Flock” drives us. We are committed to your success, and every step you take along the way.

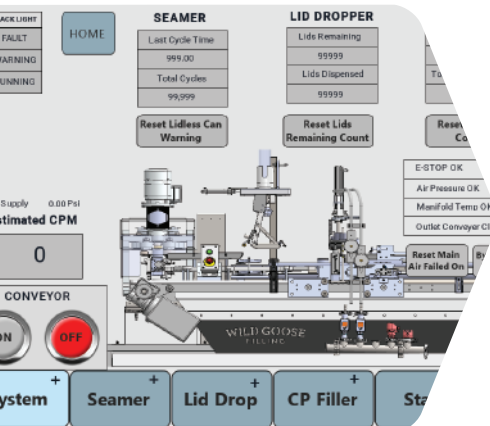


JOIN THE FLOCK

Wild Goose Filling's industry-leading systems are built to your specifications using precision engineering supported by renowned customer support. An unmatched emphasis on quality control ensures the superior taste, integrity and freshness of your products.

REVOLUTIONARY SEAMING

- Exceptional seam integrity from the fastest seamer in its class
- Patented pneumatically-actuated and cam-driven seamer design allows for precise adjustments and repeatability
- Precision cams deliver consistent seaming force can after can, avoiding the erratic results of air cylinder systems reliant solely on air
- Equivalent robustness and durability as an industrial rotary system, with lower cost and minimal maintenance
- Engineered for carbonated and nitro-assisted still canning applications
- Seamer parts machined with extremely tight tolerances for low deviation rate



USER-FRIENDLY TOUCHSCREEN TECHNOLOGY

- Highly intuitive and user-friendly full-color touchscreen interface (HMI) backed by Wild Goose Filling software
- Custom save-by-style settings
- Alerts operator to machine prompts quickly and clearly, with automatic maintenance prompts at various cycle times
- Remote diagnostic assistance capabilities and software updates via Ethernet

PRECISION FILLING METHODS

Wild Goose filling technologies deliver fast, consistent fills for any beverage while minimizing dissolved oxygen to protect your beverage quality. Wild Goose's range of atmospheric Evolution Series™ and Gosling™ systems and dual counter pressure + atmospheric Wild Goose Fusion™ systems give you the right filling options for your business. Minimal moving part construction means low maintenance with easy cleaning and high temperature sanitation.

- Atmospheric filling technology with pneumatically-actuated CO2 purge and variable-stage fill action gives unparalleled control over flow rate, fill volume and foam control on each individual fill head
- Variable-stage fill process is easily controlled through HMI using timing-based filling or optional flowmeters to monitor and indicate volume
- Proprietary counter pressure filling technology accommodates a broad range of beverage styles and carbonation levels
- Wild Goose Fusion™ dual counter pressure and atmospheric fill modes flexibly handle virtually any beverage challenge
- Individual-can pressurization technology – no conventional pressure bowl required – supports fast fill cycles through variable product conditions

ACCURATE LID PLACEMENT

- Lid detection in chute facilitates accurate dispensing, placement, seating and retention to minimize dissolved oxygen pickup
- Uniquely engineered lid placement with actuator to transfer each individual lid into the holding chute for smooth placement at various speeds
- Intelligent lid detection sensor confirms lids are present prior to seaming



HIGH-TEMPERATURE SANITATION

- Allows thorough, safe clean-in-place processes above temperatures proven to eliminate even the most heat-resistant organisms
- Minimizes potential cross-contamination when transitioning between multiple yeast strains and beverage types
- Reduces the time needed to reach desired sanitation levels
- Protects operator safety and long-term component integrity

CANNING SYSTEMS

EVOLUTION SERIES™ SINGLE-LANE

	GOSLING™	WG1	WG2	WG3	WG4	WG5
Fill Heads	1	1	2	3	4	5
Speed Up To <i>(based on 12 oz/355 mL can at optimal conditions)</i>	12 cans/min 720 cans/hr 30 cases/hr 2.2 bbl/hr 68 gal/hr 2.6 hL/hr 0.26 m³/h 258 L/hr	15 cans/min 900 cans/hr 38 cases/hr 2.7 bbl/hr 84 gal/hr 3.2 hL/hr 0.32 m³/h 320 L/hr	30 cans/min 1800 cans/hr 75 cases/hr 5.4 bbl/hr 168 gal/hr 6.3 hL/hr 0.63 m³/h 630 L/hr	35 cans/min 2100 cans/hr 88 cases/hr 6.3 bbl/hr 196 gal/hr 7.5 hL/hr 0.75 m³/h 750 L/hr	40 cans/min 2400 cans/hr 100 cases/hr 7.2 bbl/hr 225 gal/hr 8.5 hL/hr 0.85 m³/h 850 L/hr	50 cans/min 3000 cans/hr 125 cases/hr 9 bbl/hr 281 gal/hr 10.6 hL/hr 1.06 m³/h 1060 L/hr
Can Sizes*	Range	Range	Range	Range	Range	Range
Fill Head Upgradeable (Field Upgrade)	X	✓	✓	✓	✓	X
Mobile Configuration	✓	✓	✓	✓	✓	✓
European Configuration 	✓	✓	✓	✓	✓	✓
European Mobile Configuration 	✓	✓	✓	✓	✓	✓

OPTIONAL ACCESSORY COMPATIBILITY

DO Buster™ CO ₂ Tunnel	✓	Included	Included	Included	Included	Included
QuickChange™ Options	Some Included	✓	✓	✓	✓	✓
Rinse Tunnel & Air Nozzles	✓	✓	✓	✓	✓	✓
Inlet Pressure & Temp Monitors	✓	✓	✓	✓	✓	✓
Flow Meters	✓	✓	✓	✓	✓	✓
Variable-Stage Flow Mode	✓	Included	Included	Included	Included	Included
Liquid Nitrogen Dosing	✓	✓	✓	✓	✓	✓
Accumulation Pack-Out Conveyor	✓	✓	✓	✓	✓	✓
Manual Whale Tail Infeed Tray	X	✓	✓	✓	✓	✓
Blue Lift	✓	✓	✓	✓	✓	✓
Spare Parts Kit	✓	✓	✓	✓	✓	✓
SPA Treatment (Service Partnership Agreement)	✓	✓	✓	✓	✓	✓

* Wild Goose base models accommodate a range of interchangeable can heights with same body diameter and lid. Optional QuickChange™ System offers extended range of can heights, body diameters and lid types.

CANNING SYSTEMS

EVOLUTION SERIES™ DUAL-LANE		WILD GOOSE FUSION™		
WG8	WG10	FUSION 2	FUSION 4	FUSION 6
8	10	2	4	6
90 cans/min 5400 cans/hr 225 cases/hr 16.3 bbl/hr 506 gal/hr 19.2 hL/hr 1.92 m³/h 1916 L/hr	100 cans/min 6000 cans/hr 250 cases/hr 18.1 bbl/hr 562 gal/hr 21.2 hL/hr 2.12 m³/h 2129 L/hr	18 cans/min 1080 cans/hr 45 cases/hr 3.3 bbl/hr 101.2 gal/hr 3.8 hL/hr 0.38 m³/h 383.2 L/hr	28 cans/min 1680 cans/hr 70 cases/hr 5.1 bbl/hr 157.5 gal/hr 6.0 hL/hr 0.60 m³/h 596.1 L/hr	45 cans/min 2700 cans/hr 112.5 cases/hr 8.2 bbl/hr 253.1 gal/hr 9.6 hL/hr 0.96 m³/h 958.0 L/hr
Range	Range	Range	Range	Range
✓	✗	✓	✓	✗
✗	✗	✓	✓	✓
✓	✓	✓	✓	✓
✗	✗	✓	✓	✓

OPTIONAL ACCESSORY COMPATIBILITY

Included	Included	Included	Included	Included
✗	✗	✓	✓	✓
✓	✓	✓	✓	✓
✓	✓	Included	Included	Included
Included	Included	✓	✓	✓
Included	Included	Included	Included	Included
✓	✓	✓	✓	✓
✗	✗	✓	✓	✓
✗	✗	✓	✓	✓
✓	✓	✓	✓	✓
✓	✓	✓	✓	✓
✓	✓	✓	✓	✓

Wild Goose Filling systems have been custom engineered to accommodate nearly every can size and lid type. Inquire about customization if your desired can size is not listed.

5.5 oz 8 oz sleek 12 oz 16 oz 24 oz 200 mL slim 330 mL 375 mL 500 mL
8 oz 10 oz sleek 12 oz sleek 19.2 oz 187 mL slim 250 mL slim 355 mL 440 mL



GOSLING™

Designed for the growing craft beverage maker focused on product quality, the Gosling canning system is your entry into professional canning at an attractive price.

The Gosling delivers trusted Wild Goose consistency and ease-of-use to extend your product shelf life and save on labor.



The Gosling makes quality canning possible on a small scale.

Package small volumes easily from keg, tank and more. Protect your carry-out shelf life and flavor. Test your market in small batches.

GOSLING™ 2.0

Automated systems designed to preserve beverage quality for small-volume canning

SPEED UP TO
12
CANS PER MINUTE

Purge & Fill Station: Automatic
Can Lid Placement: Automatic
Seamer Station: Automatic

CONSISTENT FILLING

Filling technology with optional adjustable variable-stage flow restriction delivers consistent fills and foam control

REPEATABLE SEAMING QUALITY

Patented pneumatically-actuated and cam-driven seamer creates repeatable seams

DISSOLVED OXYGEN CONTROL

Comprehensive D.O. mitigation technologies maintain beverage flavor and freshness

HANDS-FREE LID PLACEMENT

Lid chute design accommodates full sleeves of lids with refill alerts

GUARDED ENCLOSURE

Enclosed stainless-steel structure with ergonomic access points ensures safety and sanitation

CO2 SAVER MODE

SINGLE- & MULTI-CAN PACKAGING
CIP/SIP AUTOMATION

CUSTOM RECIPE PRE-SETS

CUSTOMIZABLE ALERTS
AUTO-TESTING FUNCTIONS



INTEGRATED INTERFACE

Full-color touchscreen interface gives fast access to controls, settings and information through approachable, user-friendly menus

WILD GOOSE CONTROLS

Software designed and programmed by Wild Goose's packaging and controls experts simplifies the user experience through every machine operation

CAN SIZE FLEXIBILITY

Universal can entrance and Wild Goose QuickChange™ filling design accommodate standard and sleek body cans of various heights with simple changeover

SIMPLE INFEEED

Optional pre-rinser and GooseNeck™ infeed offer single-operator loading while keeping the footprint small

PLUG & PLAY SETUP

Ready-to-connect ports for water, compressed air and CO2 make start-up intuitive

BUILT FOR LONGEVITY

Durable, high quality Wild Goose construction assures machine reliability and longevity

TECHNICAL SPECIFICATIONS

	STANDARD, NITRO	EUROPEAN C€
Dimensions	44" L x 26" W x 41"-43" H	112 cm L x 66 cm W x 104-109 cm H
Deck Height	Entry and exit height of 12"-14" above base surface	Entry and exit height of 30.5-35.5 cm above base surface
Weight	275 lb	125 kg
Power	Single-phase 13A @ 115VAC, 50/60 Hz or Single-phase 200V-240V available	Single-phase 200V-240V
Air	Clean, dry compressed air required at 95-100 psi, 6.5 scfm; Refrigerated air dryer and coalescing air filter rated to 0.10-0.01 micron required	Clean, dry compressed air required at 6.2-6.9 bar, 185 L/min; Refrigerated air dryer and coalescing air filter rated to 0.10-0.01 micron required



EVOLUTION SERIES™

The modular Evolution Series supports you as you take the steps from your earliest production stages to higher speed canning.

With upgradeable system options, the Evolution Series expands with you affordably and with the same exceptional quality and customer service you have come to expect from Wild Goose.



Growing steadily?

Upgrade stage by stage to meet your customer demand.

Growing rapidly?

Skip stages and upgrade your output all at once.

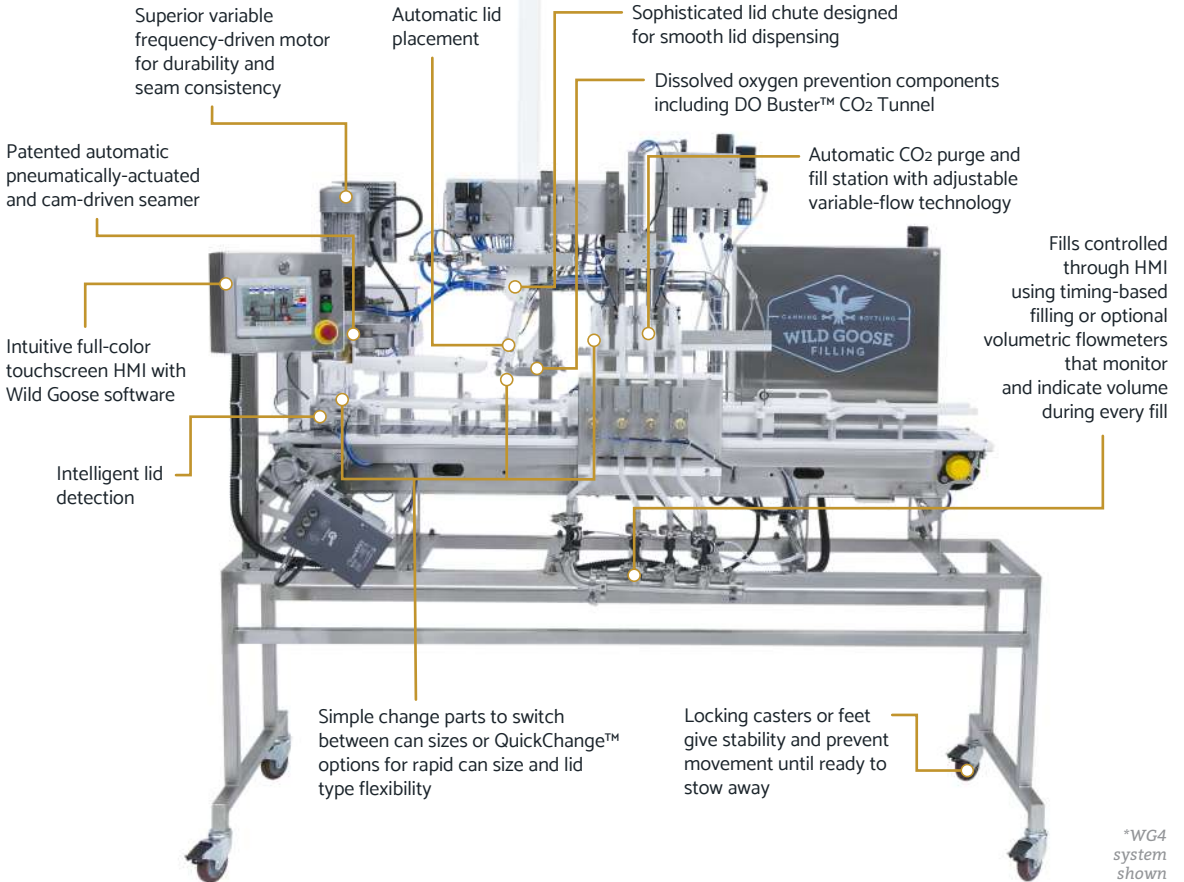
The Evolution Series expands with your demand so you can focus on crafting your best product.

EVOLUTION SERIES™ SINGLE-LANE

Upgradeable 2.7 to 9 Bbl/Hr canning systems to grow as your business grows

OPTIONS UP TO
50
CANS PER MINUTE

Purge & Fill Station: Automatic
Can Lid Placement: Automatic
Seamer Station: Automatic



TECHNICAL SPECIFICATIONS

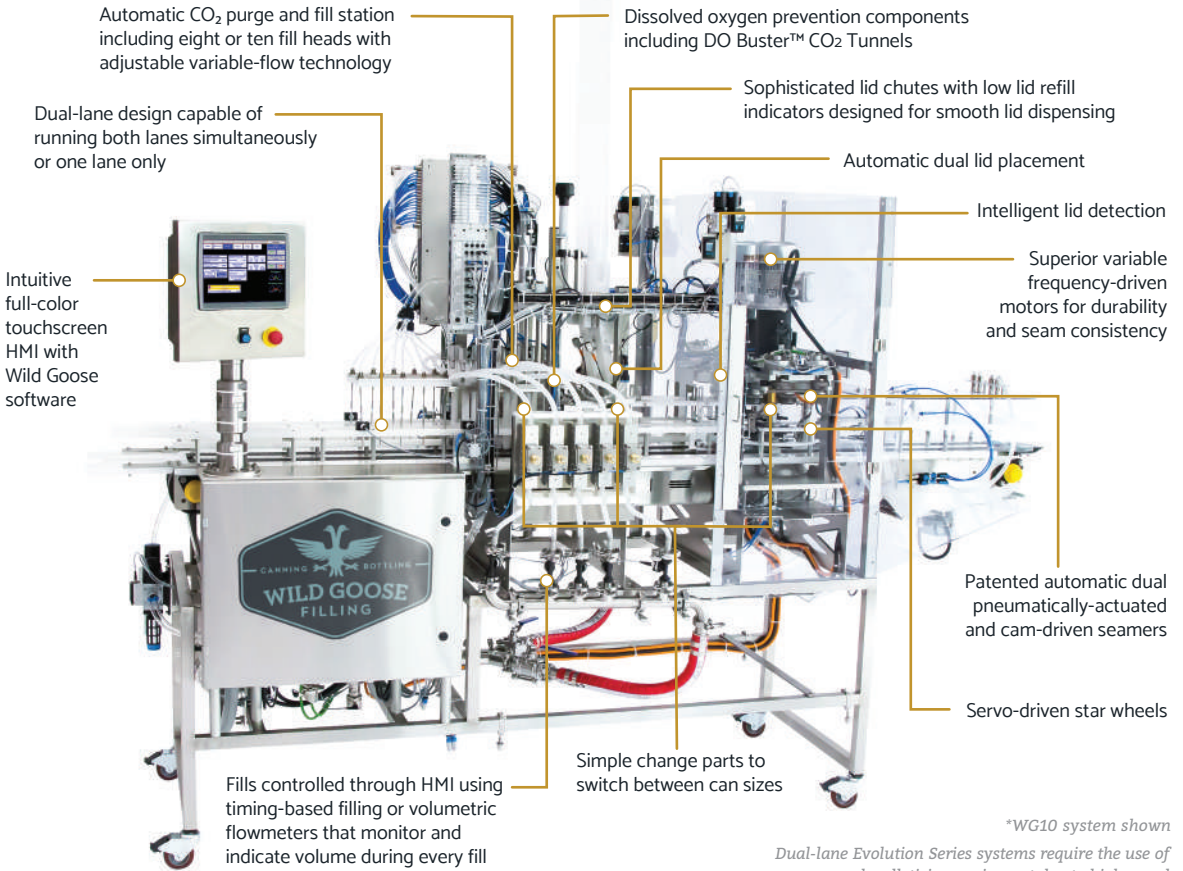
	STANDARD	EUROPEAN C€	<i>CE models include additional guarding</i>
Dimensions	88" L x 38" W x 108" H (79" H when lid tube removed)	223.5 cm L x 96.5 cm W x 274 cm H (201 cm H when lid tube removed)	
Deck Height	46" with casters; adjustable 44"-46" without casters	117 cm with casters; adjustable 112-117 cm without casters	
Weight	Up to 765 lb	Up to 347 kg	
Power	Single-phase 17A @ 115VAC, 50/60 Hz or Single-phase 200V-240V	Single-phase 12A @ 230VAC, 50/60 Hz; Knockout provided for your electrician to wire	
Air	Clean, dry compressed air required at 90 psi, 12.2 cfm; Refrigerated air dryer and coalescing air filter rated to 0.10-0.01 micron required	Clean, dry compressed air required at 6.2-6.9 bar, 345 L/min; Refrigerated air dryer and coalescing air filter rated to 0.10-0.01 micron required	

EVOLUTION SERIES™ DUAL-LANE

Higher speed WG8 and WG10 systems offering superior yield and production efficiency

OPTIONS UP TO
100
CANS PER MINUTE

Purge & Fill Station: Automatic
Can Lid Placement: Automatic
Seamer Station: Automatic



**WG10 system shown
Dual-lane Evolution Series systems require the use of depalletizing equipment due to high speed*

TECHNICAL SPECIFICATIONS

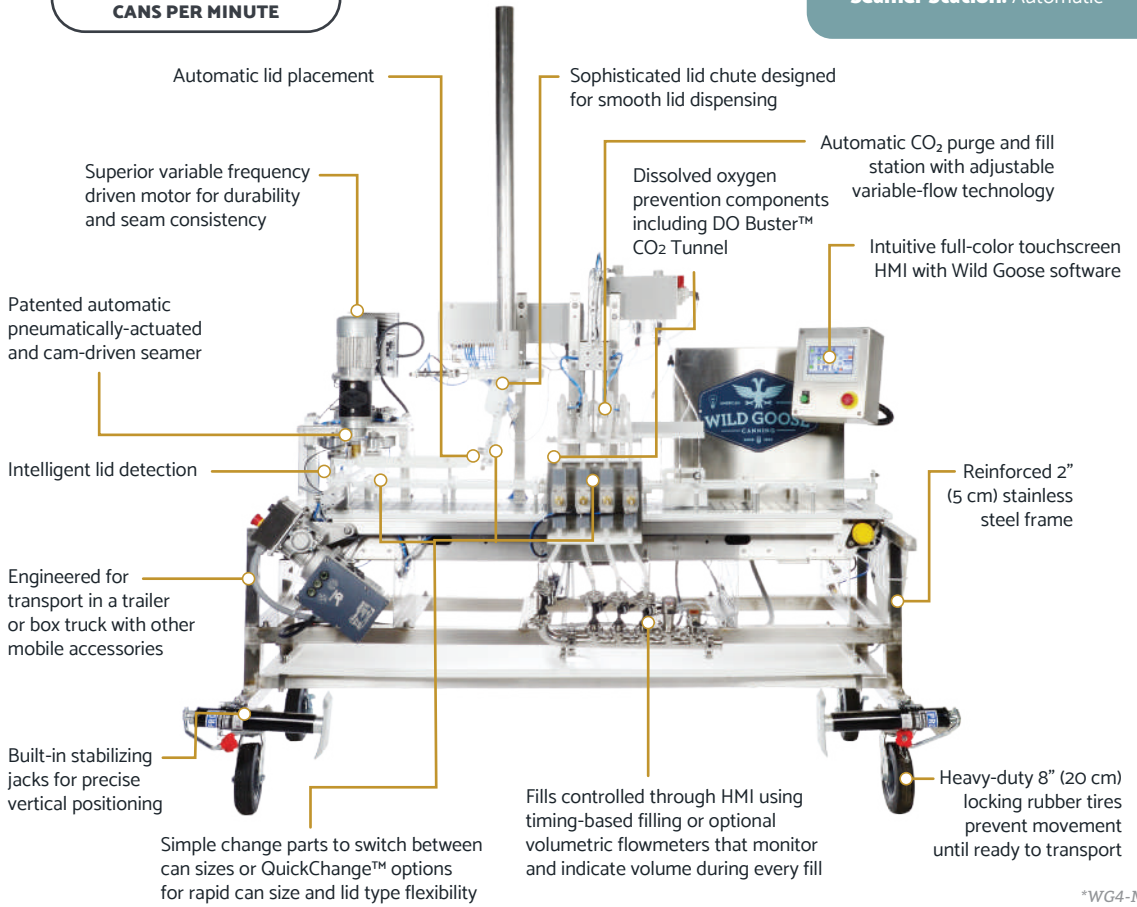
	STANDARD	EUROPEAN CE	<i>CE models include additional guarding</i>
Dimensions	130.5" L x 41" W x 109" H (90" H when lid tube removed)	331.5 cm L x 104 cm W x 277 cm H (229 cm H when lid tube removed)	
Deck Height	Adjustable 44"-46" installed on feet	Adjustable 112-117 cm installed on feet	
Weight	Up to 1,400 lb	Up to 635 kg	
Power	Three-phase (200V-240V) 18A @ 208VAC, 50/60 Hz; Knockout provided for your electrician to wire	Three-phase (200V-240V) 18A @ 208VAC, 50/60 Hz; Knockout provided for your electrician to wire	
Air	Clean, dry compressed air required at 90 psi, 22.9 cfm; Refrigerated air dryer and coalescing air filter rated to 0.10-0.01 micron required	Clean, dry compressed air required at 6.2 bar, 648 L/min; Refrigerated air dryer and coalescing air filter rated to 0.10-0.01 micron required	

MOBILE EVOLUTION SERIES™

Durable, compact mobile systems with unbeatable consistency and efficient performance

OPTIONS UP TO
50
CANS PER MINUTE

Purge & Fill Station: Automatic
Can Lid Placement: Automatic
Seamer Station: Automatic



Automatic lid placement

Sophisticated lid chute designed for smooth lid dispensing

Superior variable frequency driven motor for durability and seam consistency

Dissolved oxygen prevention components including DO Buster™ CO2 Tunnel

Automatic CO2 purge and fill station with adjustable variable-flow technology

Intuitive full-color touchscreen HMI with Wild Goose software

Patented automatic pneumatically-actuated and cam-driven seamer

Intelligent lid detection

Reinforced 2" (5 cm) stainless steel frame

Engineered for transport in a trailer or box truck with other mobile accessories

Built-in stabilizing jacks for precise vertical positioning

Fills controlled through HMI using timing-based filling or optional volumetric flowmeters that monitor and indicate volume during every fill

Heavy-duty 8" (20 cm) locking rubber tires prevent movement until ready to transport

Simple change parts to switch between can sizes or QuickChange™ options for rapid can size and lid type flexibility

*WG4-M system shown

TECHNICAL SPECIFICATIONS

	MOBILE	MOBILE EUROPEAN CE <small>CE models include additional guarding</small>
Dimensions	83.5" L x 43" W x 103" H (68" H when lid tube removed)	212 cm L x 109 cm W x 262 cm H (173 cm H when lid tube removed)
Deck Height	Adjustable 36"-46" with included jack stands	Adjustable 91.5-117 cm with included jack stands
Weight	Up to 835 lb	Up to 379 kg
Power	Single-phase 17A @ 115VAC, 50/60 Hz Single-phase 200V-240V available	Single-phase 12A @ 230VAC, 60 Hz; Knockout provided for your electrician to wire
Air	Clean, dry compressed air required at 90 psi, 12.2 cfm; Refrigerated air dryer and coalescing air filter rated to 0.10-0.01 micron required	Clean, dry compressed air required at 6.2 bar, 345 L/min; Refrigerated air dryer and coalescing air filter rated to 0.10-0.01 micron required



WILD GOOSE FUSION™

The first canning system to provide both counter pressure and atmospheric filling technologies.

The Wild Goose Fusion™ Counter Pressure + Atmospheric Canning System provides accurate, repeatable fills across beverage types, styles and conditions. Innovating a new era of canning, the Wild Goose Fusion combines the best of pioneering Wild Goose fast-pour innovations with the versatile bandwidth of counter pressure filling for unmatched canning performance.

Wild Goose's Fusion counter pressure system technology does not require a conventional pressure bowl or drum found on older style counter pressure machines.

This design upholds your packaging quality while giving you a light-weight, agile canning system with:

- Fast fill cycles
- Low dissolved oxygen
- Safe operation
- Minimal cleaning time
- Low operating costs



The Wild Goose Fusion handles your:

- Beverage varieties
- Carbonation levels
- Product pressures
- Product temperatures

Upgrade when you are ready for more speed.

The Wild Goose Fusion expands from 2 to 4 to 6 fill heads on the same footprint to keep up with your increasing demand.

WILD GOOSE FUSION™ 2.0

Counter pressure + atmospheric filling for virtually all beverage conditions and styles

OPTIONS UP TO
45
CANS PER MINUTE

Purge & Fill Station: Automatic
Can Lid Placement: Automatic
Seamer Station: Automatic

The latest in Wild Goose operation, with high-resolution full-color touchscreen HMI and Wild Goose software

Superior variable frequency-driven motor for durability and seam consistency

Patented automatic pneumatically-actuated and cam-driven seamer

Intelligent lid detection

Ergonomic frame design

Locking casters or feet give stability and prevent movement until ready to stow away

Automatic lid placement

Sophisticated lid chute designed for smooth lid dispensing

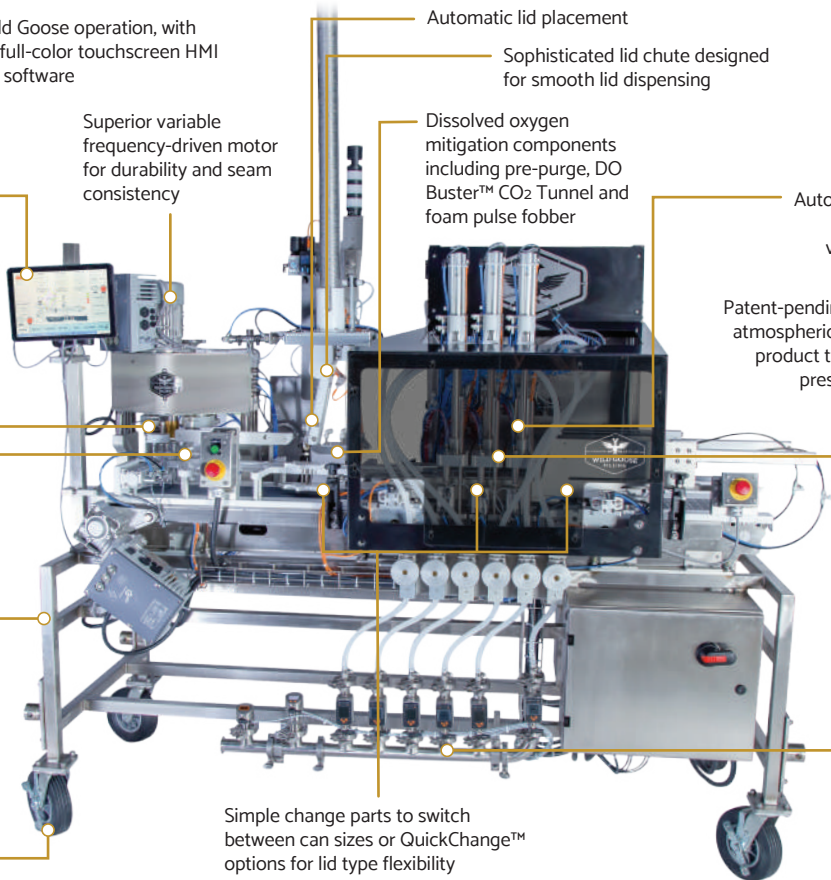
Dissolved oxygen mitigation components including pre-purge, DO Buster™ CO₂ Tunnel and foam pulse fobber

Automatic CO₂ purge and fill station with adjustable variable-flow technology

Patent-pending counter pressure and atmospheric filling to handle diverse product types, carbonation levels, pressures and temperatures

Fills controlled through HMI using timing-based filling or volumetric flowmeters that monitor and indicate volume during every fill

Simple change parts to switch between can sizes or QuickChange™ options for lid type flexibility



TECHNICAL SPECIFICATIONS

	STANDARD	EUROPEAN C€
Dimensions	88" L x 38" W x 116" H (81" H when lid tube removed)	223.5 cm L x 96.5 cm W x 295 cm H (206 cm H when lid tube removed)
Deck Height	40" with casters; Adjustable 38"-42" without casters	102 cm with casters; Adjustable 96.5-107 cm without casters
Weight	Up to 1,200 lb	Up to 635 kg
Power	Single-phase (200V-240V) 30A @ 230VAC, 60 Hz	Single-phase 12A @ 230VAC, 60 Hz; Knockout provided for your electrician to wire
Air	Clean, dry compressed air required at 90-100 psi, 12.2 cfm; Refrigerated air dryer and coalescing air filter rated to 0.10-0.01 micron required	Clean, dry compressed air required at 6.2-6.9 bar, 345 L/min; Refrigerated air dryer and coalescing air filter rated to 0.10-0.01 micron required



ACCESSORY MODULES

Wild Goose offers accessories to add to your base system for improved automation, increased production and reduced labor. These modules are designed and built by Wild Goose Filling for superior quality and compatibility with Wild Goose lines.

DO Buster™ CO₂ Tunnel ✓ €€

Dispenses uniform CO₂ blanket to block oxygen from entering open cans between filling and lid placement

- Minimizes surface disturbance through gentle laminar flow
- Removes large oxygen-heavy “frog-eye” bubbles to limit oxygen absorption
- Reinforces consistent foam levels to increase accuracy of fills and lid placement and ensure reliable underlid gassing conditions
- Accommodates each beverage’s foam conditions with adjustable flow rate, reducing CO₂ waste and maximizing operator safety



Shown in tests to help save up to 1 oz. of product per can through decreased overfill waste

QuickChange™ Options ✓ €€

Offers easy transition between can bodies and heights plus lid types and sizes for maximum packaging flexibility in under 35 minutes

- Provides industry-leading seam repeatability, with seam adjustments maintained through can height and lid size changeovers
- Minimizes changeover steps, parts and labor for simple implementation by one person in minutes
- Offers consistent fill levels and CO₂ purging at any can size, with filler adjustments maintained through can body changeovers



Accommodates any can body from 202 through 300 and any lid type from 200 through 209

Rinse Tunnel & Air Nozzles ✓ €€

Washes away product residue and reduces moisture on finished cans before final packaging

- Three adjustable multi-focus water streams
- Three adjustable multi-focus air nozzles



ACCESSORY MODULES

Inlet Pressure & Temperature Monitors ✓ CE

Provides highly accurate real-time pressure and temperature feedback during canning so operator can quickly adjust flow rate for ideal fill levels

- Offers continuous monitoring post-tank to facilitate reliable filling conditions



Flow Meters ✓ CE

Produces consistent and accurate fills regardless of fluctuating product tank pressure

- Regulates filling autonomously, without the need for operator management
- Measures product volume and controls flow in real time for precise fills



Accumulation Pack-Out Conveyor

Allows finished cans of any size to continuously accumulate for easier assembly into multipacks, cases or other packaging



Manual Whale Tail Infeed Tray

Graded tray for depalletization that attaches directly to the canning system and requires a manual push of each layer of cans from a half-height pallet to feed the machine



Blue Lift

Lifts half-height pallets of cans for infeed to Manual Whale Tail Infeed and other standard pallet infeed options



Spare Parts Kits ✓ CE

Wild Goose Filling systems use precision components and high-quality materials designed to withstand long-term wear and tear. In the event you require a replacement part, our Spare Parts Kits have you covered. The kits include a variety of essential components for your specific machine, including common wear parts, pneumatic cylinders and an assortment of sensors.



SERVICE & SUPPORT

Every Wild Goose Filling system comes with comprehensive support from our dedicated team of experts. Whether you require new training, maintenance help or spare parts, experienced Wild Goose technicians are ready to assist.

Installation & Training

Experienced technicians travel to your location to install your canning system, ensuring the machine is fully operational in your facility with your product. This onsite service includes training for your employees on all aspects of the system, including mechanical operations, machine interface functions, maintenance and best practices – translating to better production, increased part life and reduced service interruptions.

System Manuals

Wild Goose Filling systems come with thorough document resources covering general procedures, machine operations, troubleshooting, preventative maintenance and more.

Operational Manual

- Canning principles
- System overview
- System connections
- HMI operations
- Machine operations
- Clean-in-place (CIP)
- Testing seams
- Operating procedures
- Troubleshooting
- Preventative maintenance schedule

Maintenance Manual

- Maintenance, preventative maintenance and troubleshooting procedures for:
 - Filler, Lid Dropper, Seamer, HMI, Conveyor
- List of faults and warnings
- Pneumatic cylinder principles

Tool Kit

The Tool Kit accompanying each Wild Goose Filling system includes an assortment of specialized and custom tools, allowing you to fine-tune your machine for maximum quality control.

SERVICE & SUPPORT

Service & Support



When you purchase your canning system from Wild Goose Filling, you receive lifetime support from Wild Goose packaging and service experts. Should you need assistance, advice or additional training for new employees, our team is available for personalized support.

Service Partnership Agreement (“SPA Treatment”)

Get peace of mind about your equipment maintenance. Wild Goose offers an easy option to schedule regular machine care from the professionals to ensure your equipment continues to provide best-in-class performance. The “SPA Treatment” provides onsite machine inspection, cleaning, calibration, software updates and wearable parts replacement by our certified Field Service Technicians.

Parts

Wild Goose Filling systems utilize high-quality materials and precision components to ensure the system can withstand the rigors of your production environment. Occasionally a part may require replacement and you can rest assured the Wild Goose team is on call and ready to ship parts anywhere in the world to keep your system at peak performance.

Warranty

Purchase your canning system with confidence in its continued performance. Every new machine is backed by a standard 1-year Wild Goose warranty with optional extended warranty. You can trust that your Goose is built to last and supported by the Wild Goose guarantee.

Purchasing

When you purchase a Wild Goose Filling system, we custom build the machine to your specifications from the ground up. Once you have completed the three basic steps to verify your supply compatibility and initiate fabrication, you will be canning on your new Wild Goose system in no time.

1. Provide your machine order requirements:
 - Can size
 - Lid type
 - Electrical supply
 - Compressed air supply
 - Double seam can reports from can manufacturer
 - Layout of space or other packaging equipment in your facility
 - Any additional information needed to customize your machine
2. Submit your signed purchase agreement
3. Send in your deposit

Need financing?

Wild Goose can help. Contact us to learn more about your options.

Worldwide support, wherever you call home.



*Join
the
Flock.*



USA Headquarters:

633 CTC Boulevard, Suite 100
Louisville, Colorado 80027 USA

European Offices:

Barcelona, Spain
Trento, Italy

+1 720.406.7442

Sales@WildGooseFilling.com

www.WildGooseFilling.com